

SUZUKI KATANA STREET SPORTS STAINLESS FULL SYSTEM R-11 SINGLE EXIT

Product information



Be sure to read the instruction carefully before starting the work. It is necessary to follow the contents to install Yoshimura product.

CAUTION Installation of this product is required rear suspension removal. Follow the procedures in Genuine service manual for the suspension removal and installation.

1. Product Information :

Description	SUZUKI KATANA Street Sports Stainless Full System R-11 Single Exit			
Part Number	Metal Magic Sleeve (SM)	: 170-199-5F20	Cyclone Type	S196S11C2
	Satin Finish Sleeve (SSF)	: 170-199-5F30	Main Material	Stainless steel
	Titanium Blue Sleeve (STB)	: 170-199-5F80B	Weight	(SS) & (SM) : 6.3kg (ST) & (STB) : 6.1kg
			[STD : 10.4kg]	

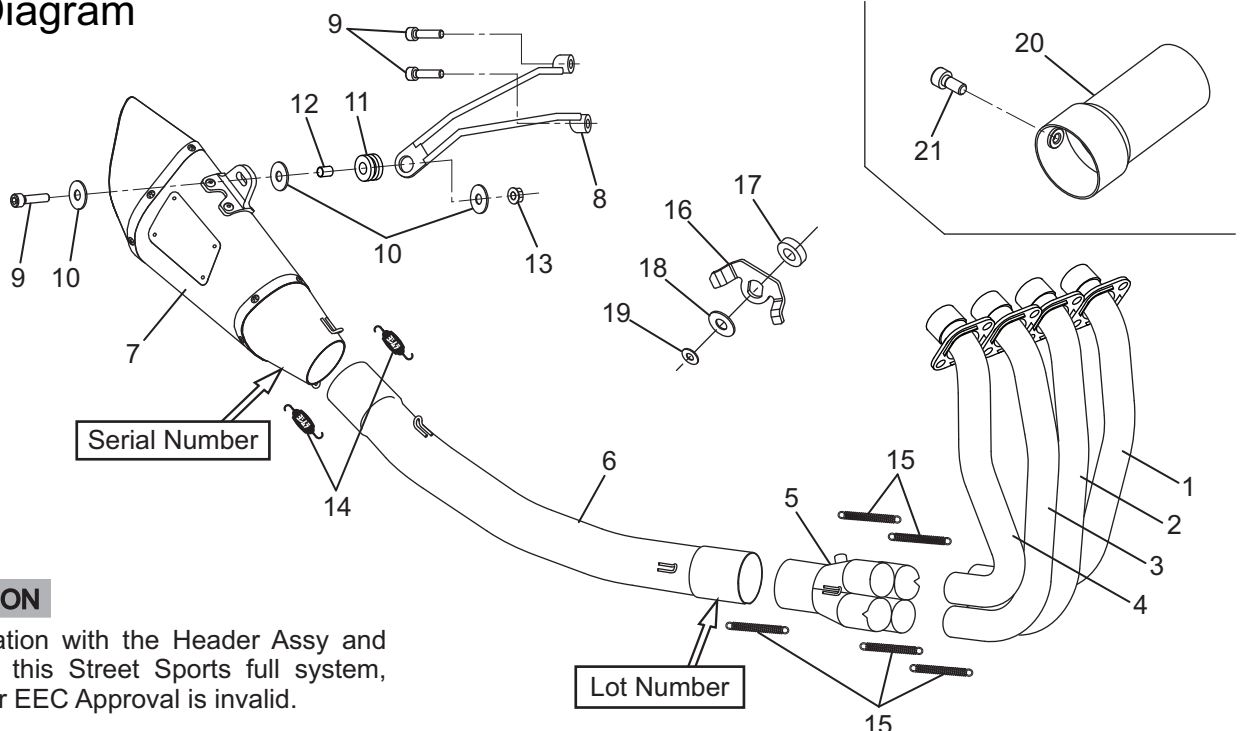
2. Applicable Model :

Model	SUZUKI KATANA(2019-2021)
-------	--------------------------

3. Contents:

No.	Descriptions	Part No.	Q'ty	No.	Descriptions	Part No.	Q'ty
1	Exhaust Pipe #1	181-196-5F00	1	11	Grommet Rubber	553-565-0000	1
2	Exhaust Pipe #2	182-196-5F00	1	12	Grommet Spacer	850-208-1212	1
3	Exhaust Pipe #3	183-196-5F00	1	13	Flange Nut M8	823-008-1250	1
4	Exhaust Pipe #4	184-196-5F00	1	14	Exhaust Spring (Short)	118-001-0000	2
5	Exhaust Collector	119-196-5000	1	15	Exhaust Spring (Long)	118-000-1000	5
6	Tailpipe	185-196-5F00	1	16	Exhaust Control Valve Canceller Bracket	148-984-0021	1
7	Silencer Assy, (SM)	1F6-196-5E20	1	17	Aluminum Spacer 12-20-7	860-012-2007	1
	Silencer Assy, (SSF)	1F6-196-5E30		18	Washer M12	812-512-1815	1
	Silencer Assy, (STB)	1F6-196-5E80B		19	Washer M5	812-205-1512	1
8	Silencer Bracket	161-199-0300	1	20	SD#98	138-138-4398	1
9	Cap Bolt M8x30	800-208-5030	3	21	Cap Bolt M6x6 with Thread Lock	800-806-4006	1
10	Washer M8x26	812-108-2600	3	*	Spring Inner Tube	118-000-1100	5

Parts Diagram



CAUTION

In combination with the Header Assy and Tailpipe of this Street Sports full system, the silencer EEC Approval is invalid.